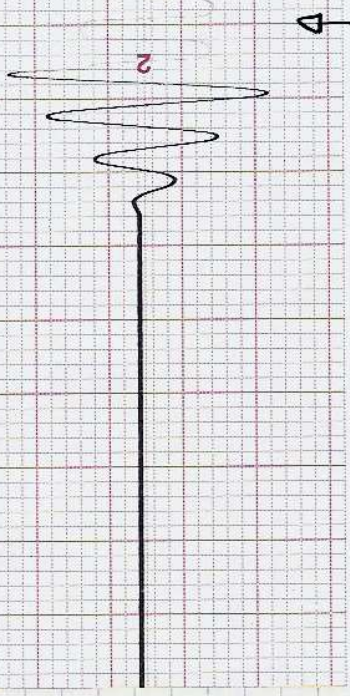
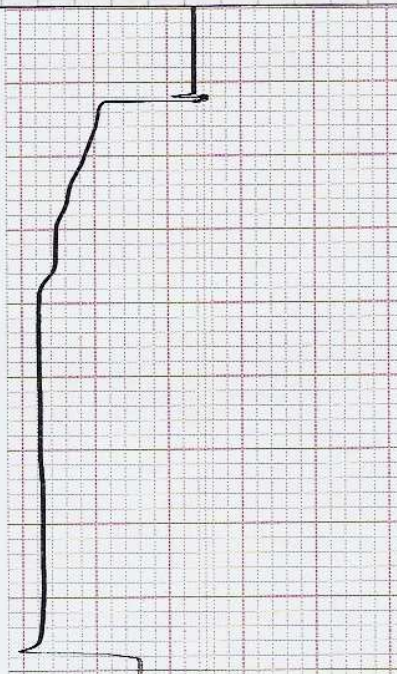
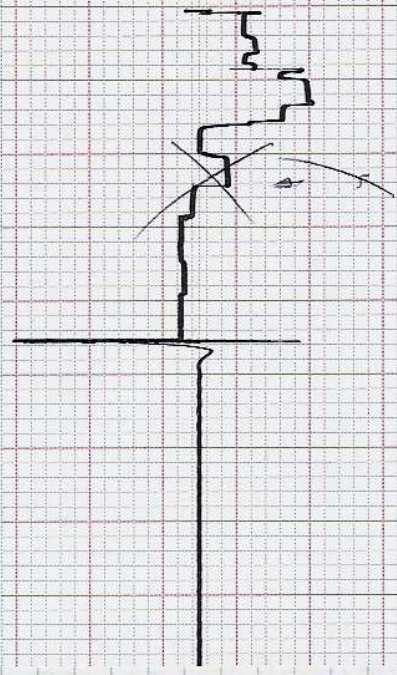
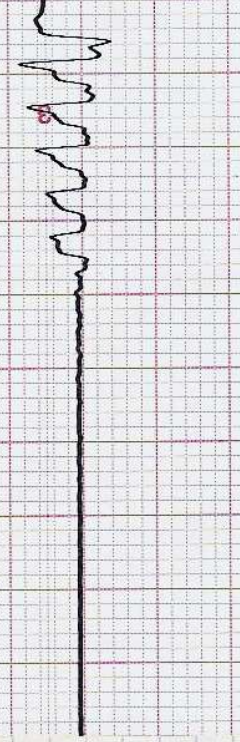
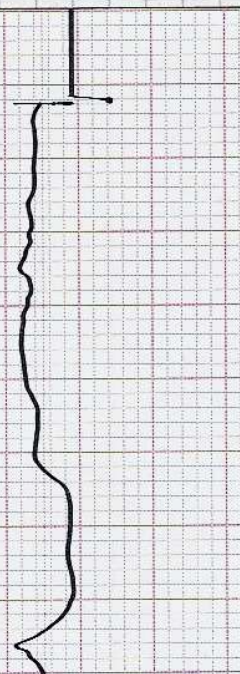
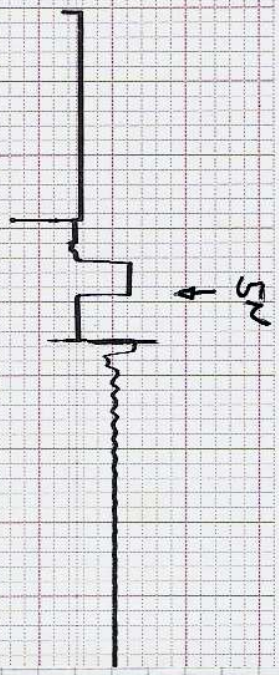


V

Kaputter Dämpfer (schwingt nach)

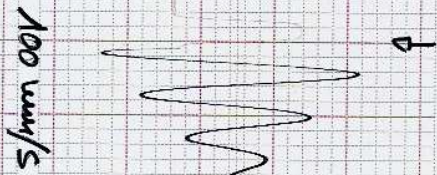


100 mm/s





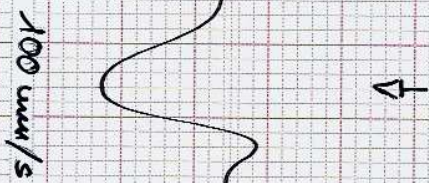
Kaputter Dämpfer



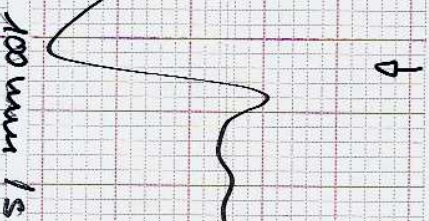
100 mm/s



ganzer Dämpfer  
kein Nachschwingen



100 mm/s

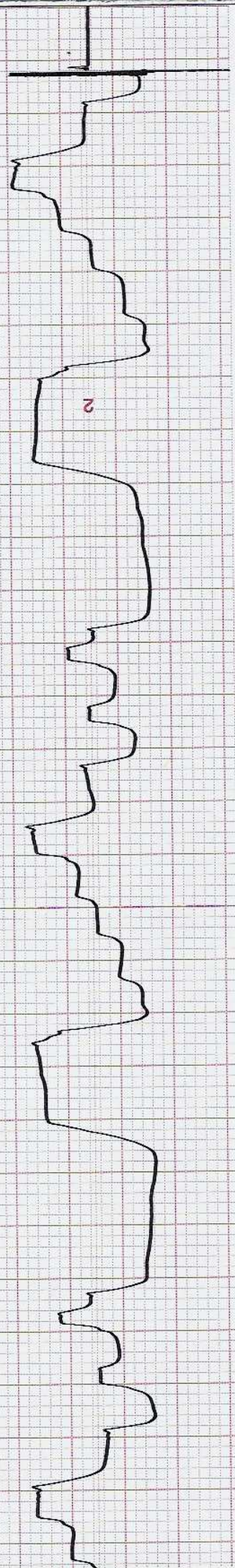


100 mm/s





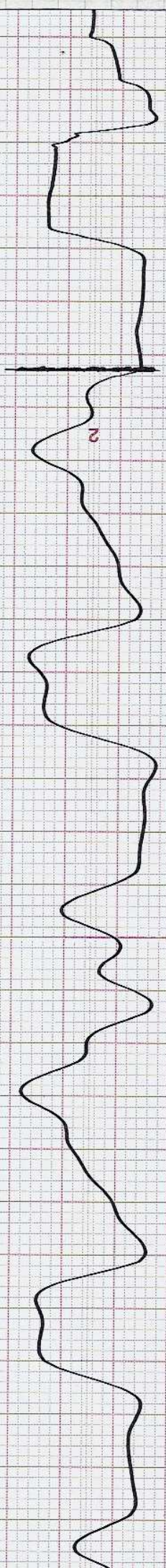
→ geringer Dämpfer => guter Strahlkontakt





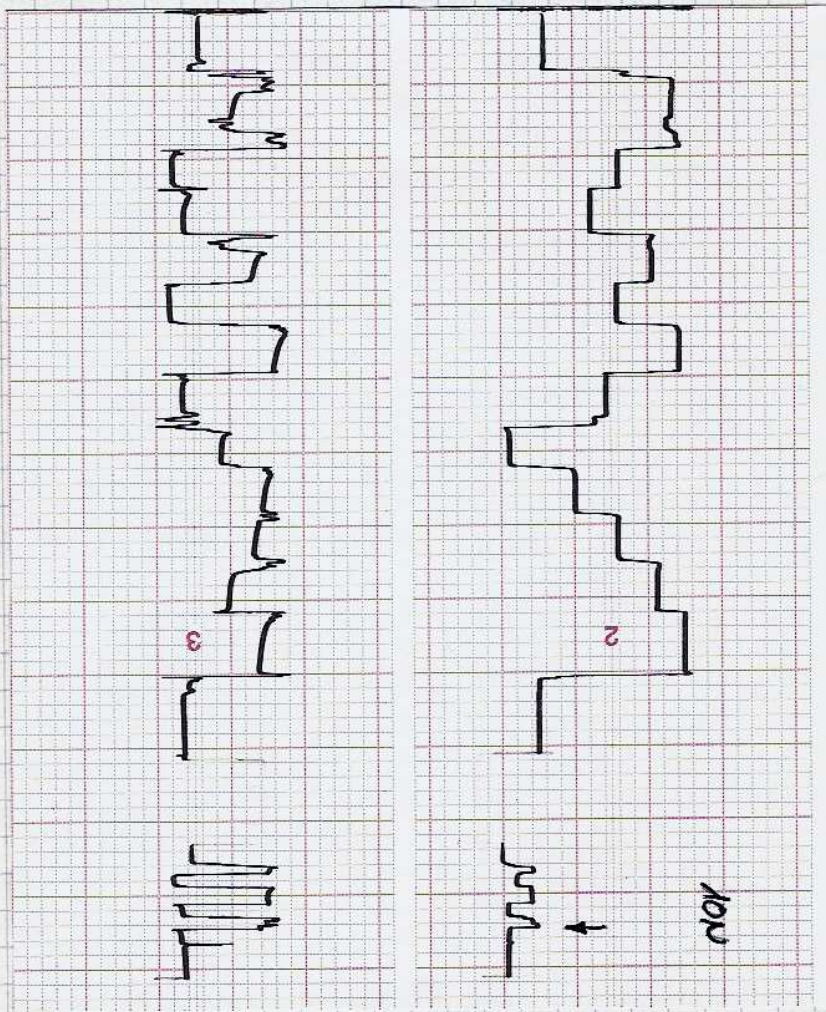
gaurer  
→ Dämpfer

→ kaputter Dämpfer ⇒ Rad hebt von Straße ab

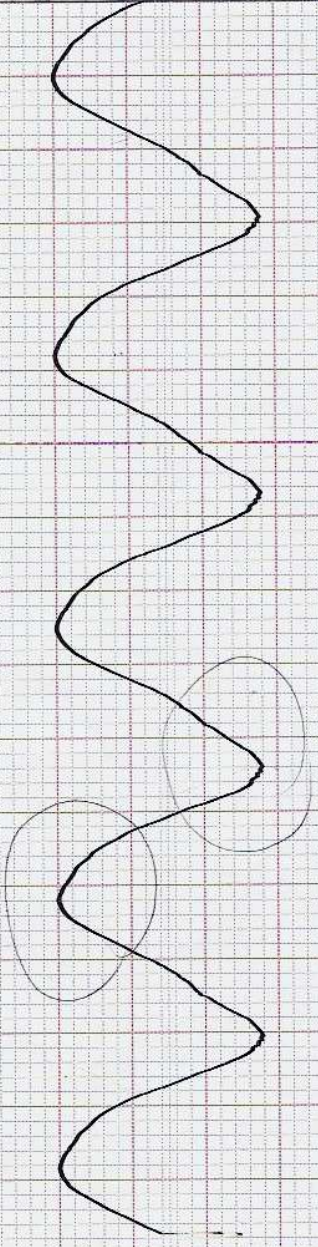




→ Strahlenevelart

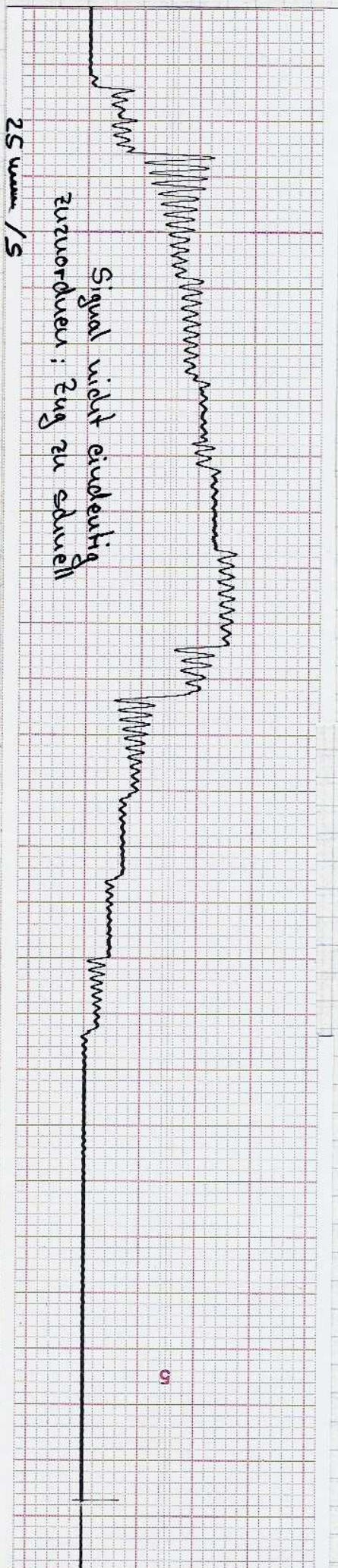
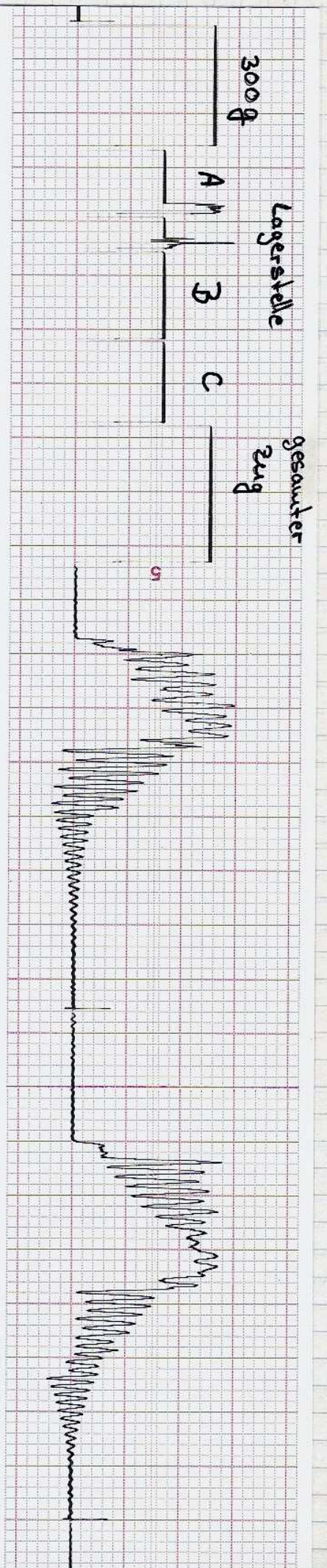


Abweichung von Sinusdarstellung



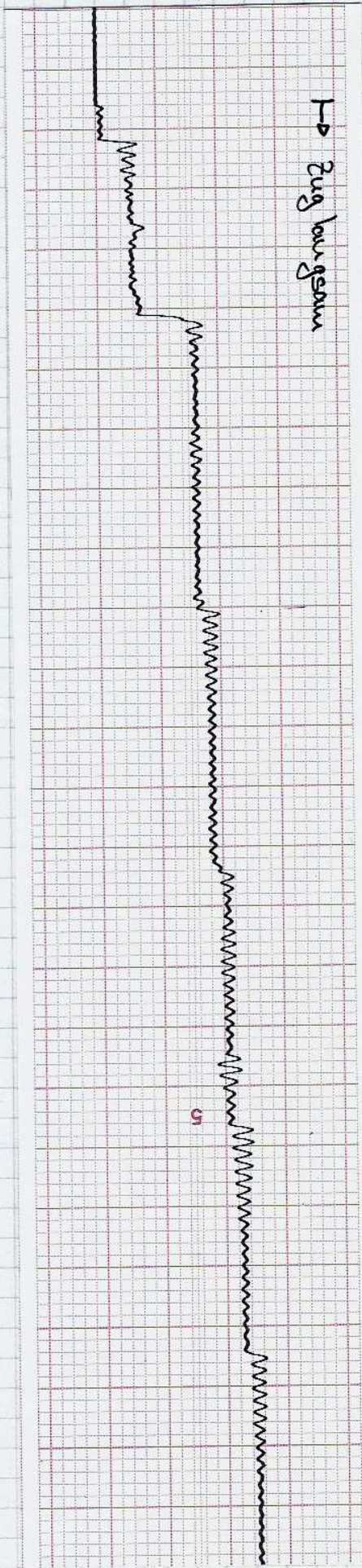
25 mm/s







↳ Zug losgeraten



1. Achse Lok

2. Achse Lok

Lok ganz

1. Wagen  
1. Achse

1. Wagen  
2. Achse

2. Wagen  
1. Achse

↳ gesamter Zug

ges. Zug

↳ wieder rückwärts

